

SIGMASLAB® ENGINEERED CONTAINER HARDSTAND SOLUTION

The Mondiale facility required a high-performance concrete hardstand capable of supporting extreme operational demands, including:

- 5-high stacked containers
- Heavy container handler traffic
- Continuous high-load movements
- 10,500m² of operational pavement

With efficiency in construction, durability, and long-term asset performance critical, the project required a slab system that could minimise joints, accelerate construction, and reduce lifecycle maintenance exposure.

The project adopted the **SigmaSlab®** system — an integrated design methodology combining:

- **Dramix steel fibres** high-performance steel fibre reinforcement
- **CCL post-tensioning** technology

This hybrid approach combines distributed fibre reinforcement with active post-tensioning to deliver enhanced crack control, improved load distribution, and significant joint reduction compared to conventional reinforced slab construction.

Key Outcomes

Joint Minimisation

Only **two joints** were required across the entire 10,500m² hardstand.

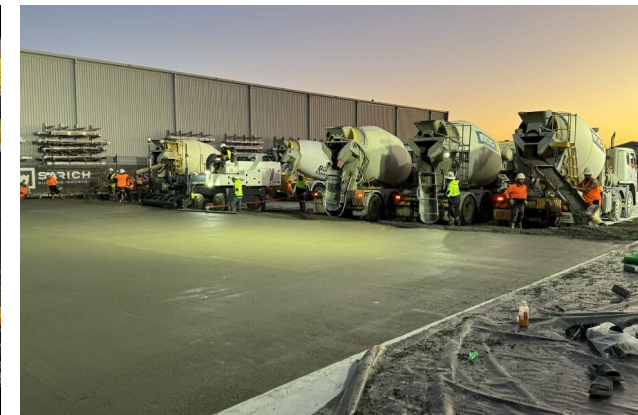
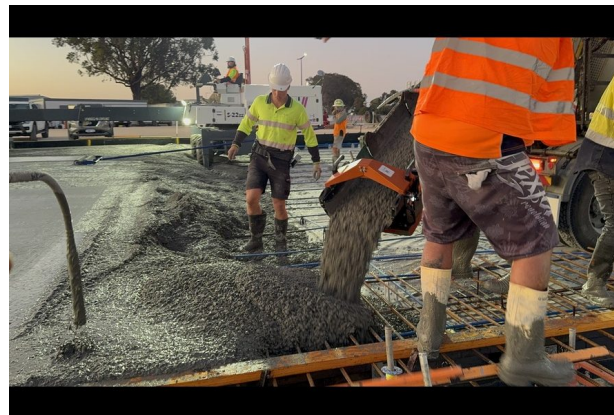
Design Efficiency

The synergy between fibres and post-tensioning enabled an optimised slab design.

Construction Speed

Large panel pours were achieved, reducing reinforcement installation time and improving placement efficiency.

Reduced Lifecycle Maintenance



Fewer joints and improved crack control translate into lower repair frequency, improved surface performance, and enhanced operational uptime in a high-demand logistics environment.

Sustainability & Environmental Performance

The SigmaSlab® solution contributes to improved environmental outcomes through:

- **Material Optimisation**
- **Reduced Embodied Carbon Potential**
- **Extended Service Life**
- **EPD Transparency**

Project Result

The SigmaSlab® system delivered a durable, high-capacity container hardstand engineered for structural performance, construction efficiency, and long-term sustainability.

From design concept through to delivery, SigmaSlab® provided measurable construction efficiencies, reduced maintenance exposure, and whole-of-life value beyond conventional slab systems

CALL 1300 665 755 (AUS) OR 0800 665 755 (NZ)

VISIT [BOSFA.COM](https://www.bosfa.com)

